



2025

KARNATAKA RADIOLOGY EDUCATION PROGRAM

MEDIASTINAL MASS

- FROM - Department of Radiodiagnosis , KMCRI Hubli
- MENTOR - DR G C PAPTIL , Professor ,
Department of Radiodiagnosis , KMCRI Hubli

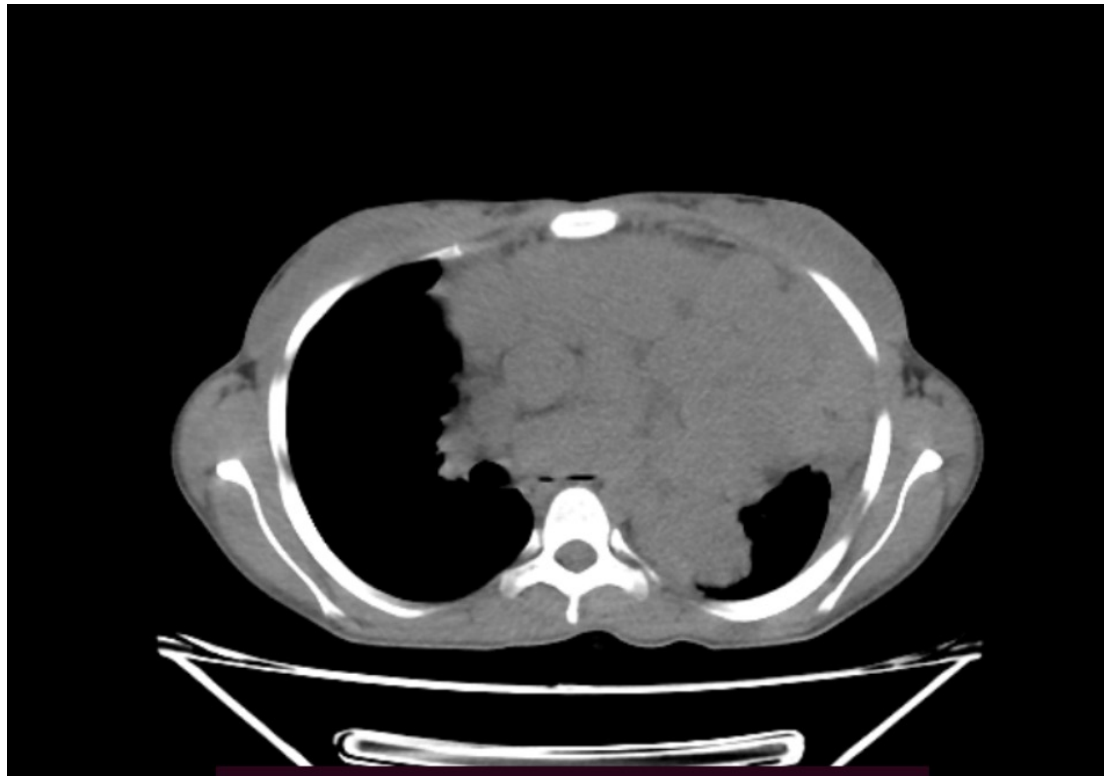
HISTORY AND EXAMINATION

- age/sex - 17yr/female
- chief complaints - cough since 1 month, fever since 1 month, pruritus since 1 year,
- no h/o breathlessness, hemoptysis
- no h/o pain abdomen , vomiting
- family history - nothing significant
- examination - reduced air entry on left side of chest with dullness on percussion
- other systems - NAD

Chest Radiography



CT





- MULTIPLE GROSSLY ENLARGED DISCRETE AND MATTED LYMPHNODES ARE NOTED IN THE ANTERIOR MEDIASTINUM , PREVASCULAR , PRE AND PARATRACHEAL, LEFT HILAR GROUP , PREDOMINANTLY IN PREVASCULAR GROUP

DDs

- Lymphoma
- Thymoma

- FNAC confirmed as Lymphoma

THANK YOU